

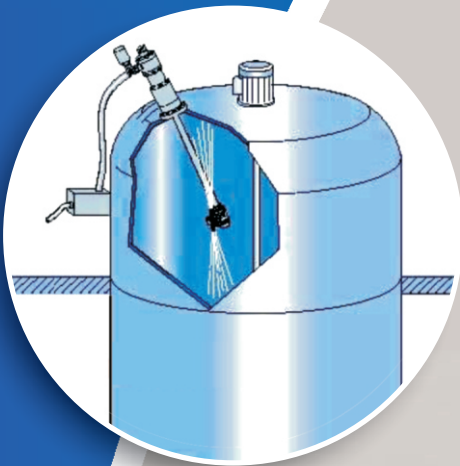
**ATUL**  
SPRAY SYSTEMS



## Tank Cleaning Nozzles

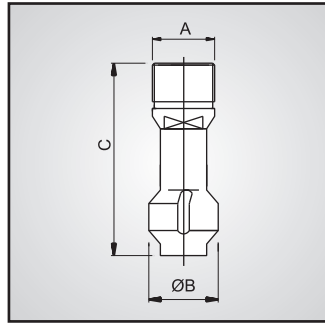
### APPLICATION

- Pharmaceutical Industry
- Food Industry
- Chemical Engineering
- Cement Industry
- Beverage Industry
- Ointment Plant
- Bioengineering
- and many more....



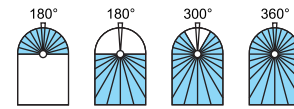
# ATUL SPRAY BALL - SERIES E00 - STAINLESS STEEL VERSION

- **Material :**  
Stainless Steel AISI 316 L
- **Bearing :** Peek  
Slide Bearing
- Excellent cleaning power
- Insert in small openings
- Self Lubricating
- Special Design with Slip-on & Tri-Clamp



**Max Spray Dia** : 600 mm  
**Ope. Pressure** : 2 BAR  
**Max Temp.** : 140 °C  
**Coverage** : 360° & Partial

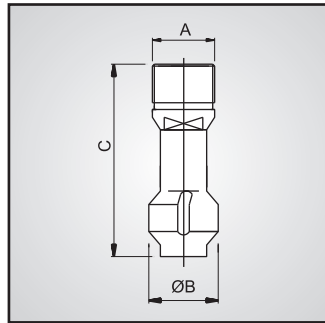
**Spray Angle** ✧



SR	MODEL NUMBER	END CONNECTION	FLOW RATE			DIMENSIONS	
			@ BAR			DIA	LENGTH
		A	1	2	3	B	C
1	ATUL- E00.016.24.1E.AB	1/8" BSP ( F )	12	16	19	18	51
2	ATUL- E00.018.24.1E.AC	1/4" BSP ( M )	14	18	21	18	51
3	ATUL- E00.021.24.1E.AE	3/8" BSP ( M )	16	21	25	21	51

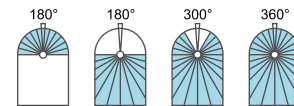
# ATUL SPRAY BALL - SERIES E05 - PTFE VERSION

- **Material :** PTFE
- **Bearing :** PTFE  
Slide Bearing
- Good Corrosion Resistance
- Light Weight
- Balance rotating action
- Operates in every position
- Special Design with Slip-on & Tri-Clamp



**Max Spray Dia** : 600 mm  
**Ope. Pressure** : 2 BAR  
**Max Temp.** : 100 °C  
**Coverage** : 360° & Partial

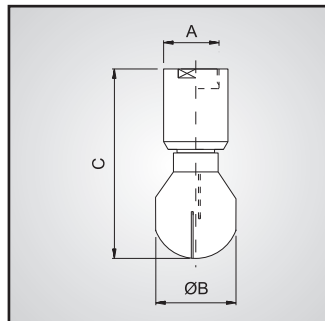
**Spray Angle** ✧



SR	MODEL NUMBER	END CONNECTION	FLOW RATE			DIMENSIONS	
			@ BAR			DIA	LENGTH
		A	1	2	3	B	C
1	ATUL-E05.030.24.55.AH	1/2" BSP (F)	23	30	35	30	80

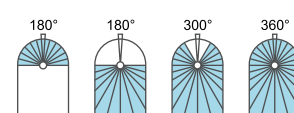
# ATUL SPRAY BALL - SERIES E20

- Two Size Groups (Micro & Mini)
- High Flow Slot Orifices produce big sprays from a small head
- **Material :**  
Corrosion Resistant Stainless Steel AISI 316 L
- **Bearing :** Double Bearings made of Stainless Steel AISI 316 L
- Special Design with Slip-on & Tri-Clamp



**Max Spray Dia** : 900 mm  
**Ope. Pressure** : 2 BAR  
**Max Temp.** : 140 °C  
**Coverage** : 360° & Partial

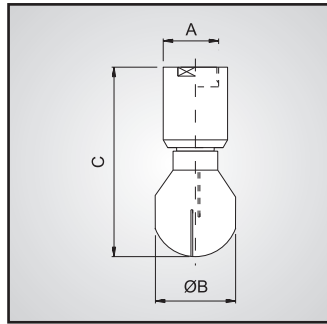
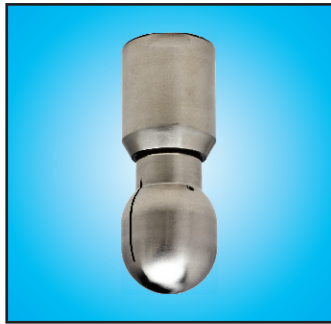
**Spray Angle** ✧



SR	MODEL NUMBER	END CONNECTION	FLOW RATE			DIMENSIONS	
			@ BAR			DIA	LENGTH
		A	1	2	3	B	C
1	ATUL- E20.021.24.1E.AF	3/8" BSP (F)	16	21	25	28	78
2	ATUL- E20.035.24.1E.AH	1/2" BSP (F)	27	35	41	28	78

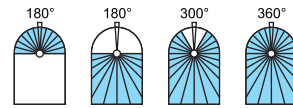
## ATUL SPRAY BALL - SERIES E25

- Two Size Groups (Micro & Mini)
- High Flow Slot Orifices produce big sprays from a small head
- Head balance for minimum vibration
- Free Spinning, Self Lubricating and Self Flushing
- **Material** : Corrosion Resistant Stainless Steel AISI 316 L
- **Bearing** : Double Bearings made of Stainless Steel AISI 316 L



**Max Spray Dia** : 1.5 m  
**Ope. Pressure** : 2 BAR  
**Max Temp.** : 140 °C  
**Coverage** : 360° & Partial

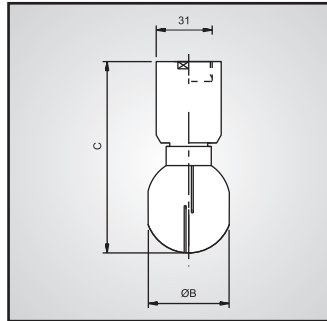
**Spray Angle** ⇄



SR	MODEL NUMBER	END CONNECTION	FLOW RATE			DIMENSIONS	
			@ BAR			DIA	LENGTH
		A	1	2	3	B	C
1	ATUL- E25.045.24.1E.AH	1/2" BSP (F)	34	45	53	30	82
2	ATUL- E25.045.24.1E.TF10	SLIP ON - 1"	34	45	53	30	100

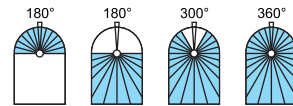
## ATUL SPRAY BALL - SERIES EMI

- Two Size Groups (Micro & Mini)
- High Flow Slot Orifices produce big sprays from a small head
- Head balance for minimum vibration
- Free Spinning, Self Lubricating and Self Flushing
- **Material** : Corrosion Resistant Stainless Steel AISI 316 L
- **Bearing** : Double Bearings made of Stainless Steel AISI 316 L



**Max Spray Dia** : 1.8 m  
**Ope. Pressure** : 2 BAR  
**Max Temp.** : 140 °C  
**Coverage** : 360° & Partial

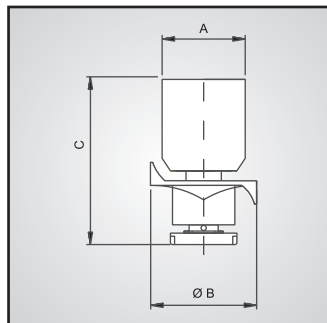
**Spray Angle** ⇄



SR	MODEL NUMBER	END CONNECTION	FLOW RATE			DIMENSIONS	
			@ BAR			DIA	LENGTH
		A	1	2	3	B	C
1	ATUL- EMI.049.24.1E.AL	3/4" BSP(F)	37	49	58	36	97
2	ATUL- EMI.069.24.1E.AL	3/4" BSP(F)	52	69	81	36	97

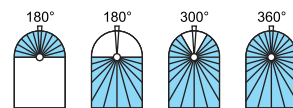
## ATUL TURBO JET SPRAY BALL - SERIES E68

- **Material** : Corrosion Resistant Stainless Steel AISI 316 L
- **Bearing** : PTFE Slide Bearings
- Wash fluid entering the TURBODISC is directed onto the precision shaped disc. Hydraulic bearings allow the disc to rotate friction free at high speed and the wash fluid is distributed in a dense spray.



**Max Spray Dia** : 2.6 - 3 m  
**Ope. Pressure** : 2 BAR  
**Max Temp.** : 140 °C  
**Coverage** : 360° & Partial

**Spray Angle** ⇄

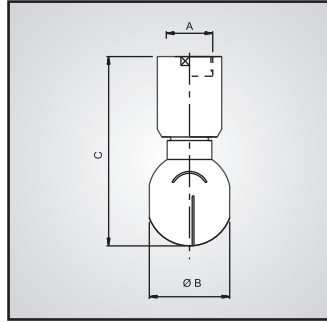


SR	MODEL NUMBER	END CONNECTION	FLOW RATE			DIMENSIONS	
			@ BAR			DIA	LENGTH
		A	1	2	3	B	C
1	ATUL- E68.050.24.1E.AL	3/4" BSP (F)	45	50	55	51	83
2	ATUL- E68.100.24.1E.AN	1" BSP (F)	76	100	118	51	83



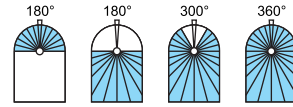
## ATUL SPRAY BALL - SERIES EMI

- High Flow Slot Orifices produce big sprays from a small head
- Head balance for minimum vibration
- Free Spinning, Self Lubricating and Self Flushing
- **Material :**  
Corrosion Resistant Stainless Steel AISI 316 L
- **Bearing :** Double Bearings made of Stainless Steel AISI 316 L



**Max Spray Dia** : 2.1 m  
**Ope. Pressure** : 2 BAR  
**Max Temp.** : 140 °C  
**Coverage** : 360° & Partial

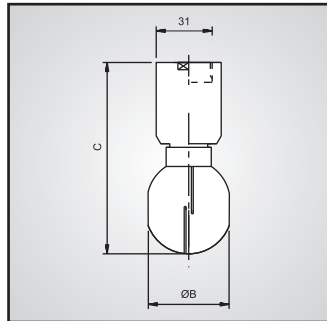
**Spray Angle** ↗



SR	MODEL NUMBER	END CONNECTION	FLOW RATE			DIMENSIONS	
			@ BAR			DIA	LENGTH
		A	1	2	3	B	C
1	ATUL-EMI.089.24.1E.AL	3/4" BSP (F)	67	89	104	45	107
2	ATUL-EMI.089.24.1E.AN	1" BSP (F)	67	89	104	45	116

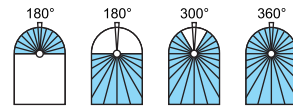
## ATUL SPRAY BALL - SERIES EMA

- High Flow Slot Orifices produce big sprays from a small head
- Head balance for minimum vibration
- Free Spinning, Self Lubricating and Self Flushing
- **Material :**  
Corrosion Resistant Stainless Steel AISI 316 L
- **Bearing :** Double Bearings made of Stainless Steel AISI 316 L



**Max Spray Dia** : 2.5-3 m  
**Ope. Pressure** : 2 BAR  
**Max Temp.** : 140 °C  
**Coverage** : 360° & Partial

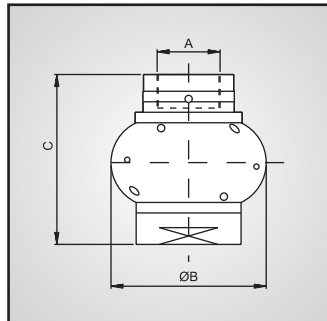
**Spray Angle** ↗



SR	MODEL NUMBER	END CONNECTION	FLOW RATE			DIMENSIONS	
			@ BAR			DIA	LENGTH
		A	1	2	3	B	C
1	ATUL- EMA.130.24.1E.AN	1" BSP (F)	99	130	153	50	115
2	ATUL- EMA.160.24.1E.AN	1" BSP (F)	121	160	188	50	115
3	ATUL- EMA.190.24.1E.AQ	1-1/4" BSP (F)	145	190	223	54	130

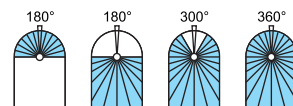
## ATUL SPRAY BALL SERIES - SERISE E83 - PTFE VERSION

- **Material :** PTFE
- **Bearing :** PTFE Slide Bearings
- Corrosion Resistant
- Light Weight
- Balanced Rotating Action
- Operates in every position
- Free Spinning, Self Lubricating & Self Flushing
- Recommended for Glass Lined Tanks



**Max Spray Dia** : 3.0 m  
**Ope. Pressure** : 2 BAR  
**Max Temp.** : 140 °C  
**Coverage** : 360° & Partial

**Spray Angle** ↗

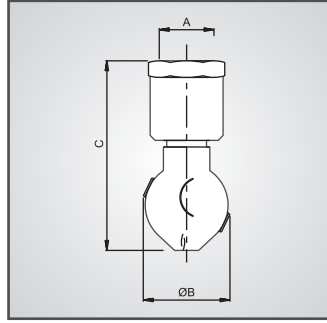


SR	MODEL NUMBER	END CONNECTION	FLOW RATE			DIMENSIONS	
			@ BAR			DIA	LENGTH
		A	1	2	3	B	C
1	ATUL-E83.050.24.55.AL	3/4" BSP (F)	50 TO 100 LPM			60	71
2	ATUL-E83.100.24.55.AN	1" BSP (F)	50 TO 225 LPM			74	84



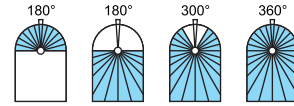
# ATUL HIGH IMPACT SPRAY BALL - SERIES E66

- **Material** : Corrosion Resistant Stainless Steel AISI 316 L
- **Bearing** : Double Bearings made of Stainless Steel AISI 316 L
- Flat Jet Nozzles with improved vertical coverage
- Better balance for smooth operations
- If you need to mount a tank washer in an odd position where it can't hang straight down, use the new Dual Race Whirling Nozzle. This special bearing configuration allows mounting at any angle from straight up and can be added to any of the stainless Whirling Nozzles.



**Max Spray Dia** : 2.2 m  
**Ope. Pressure** : 2 BAR  
**Max Temp.** : 140 °C  
**Coverage** : 360° & Partial

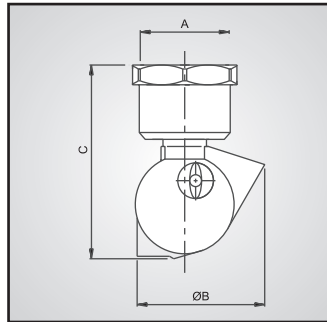
**Spray Angle** ↗



SR	MODEL NUMBER	END CONNECTION	FLOW RATE			DIMENSIONS	
			@ BAR			DIA	LENGTH
		A	1	2	3	B	C
1	ATUL- E66.050.24.1E.AL	3/4" BSP (F)	38	50	59	51	106
2	ATUL- E66.075.24.1E.AL	3/4" BSP (F)	57	75	88	51	106
3	ATUL- E66.100.24.1E.AL	3/4" BSP (F)	76	100	118	51	106
4	ATUL- E66.050.24.1E.AN	1" BSP (F)	38	50	59	51	106
5	ATUL- E66.075.24.1E.AN	1" BSP (F)	57	75	88	51	106
6	ATUL- E66.100.24.1E.AN	1" BSP (F)	75	100	118	51	106

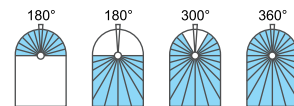
# ATUL HIGH IMPACT SPRAY BALL - SERIES E67

- **Material** : Corrosion Resistant Stainless Steel AISI 316 L
- **Bearing** : Double Bearings made of Stainless Steel AISI 316 L
- Flat Jet Nozzles with improved vertical coverage
- Better balance for smooth operations
- If you need to mount a tank washer in an odd position where it can't hang straight down, use the new Dual Race Whirling Nozzle. This special bearing configuration allows mounting at any angle from straight up and can be added to any of the stainless Whirling Nozzles.



**Max Spray Dia** : 3 m  
**Ope. Pressure** : 2 BAR  
**Max Temp.** : 140 °C  
**Coverage** : 360° & Partial

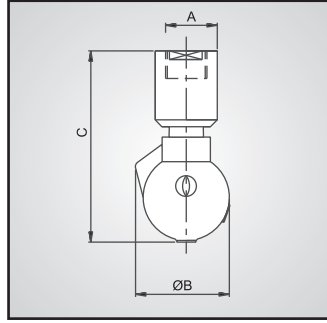
**Spray Angle** ↗



SR	MODEL NUMBER	END CONNECTION	FLOW RATE			DIMENSIONS	
			@ BAR			DIA	LENGTH
		A	1	2	3	B	C
1	ATUL- E67.050.24.1E.AL	3/4" BSP (F)	38	50	59	65	100
2	ATUL- E67.075.24.1E.AL	3/4" BSP (F)	57	75	88	65	100
3	ATUL- E67.100.24.1E.AL	3/4" BSP (F)	76	100	118	65	100
4	ATUL- E67.125.24.1E.AL	3/4" BSP (F)	95	125	147	65	100
5	ATUL- E67.050.24.1E.AN	1" BSP (F)	38	50	59	65	100
6	ATUL- E67.075.24.1E.AN	1" BSP (F)	57	75	88	65	100
7	ATUL- E67.100.24.1E.AN	1" BSP (F)	76	100	118	65	100
8	ATUL- E67.125.24.1E.AN	1" BSP (F)	114	125	147	65	100

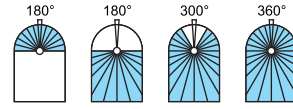
# ATUL HIGH IMPACT SPRAY BALL - SERIES E69

- **Material :**  
Corrosion Resistant  
Stainless Steel AISI  
316 L
- **Bearing :** Double  
Bearings made of  
Stainless Steel AISI  
316 L
- Flat Jet Nozzles  
with improved  
vertical coverage
- Better balance for  
smooth operations
- If you need to  
mount a tank  
washer in an odd  
position where it  
can't hang straight  
down, use the new  
Dual Race Whirling  
Nozzle. This special  
bearing  
configuration  
allows mounting at  
any angle from  
straight up and can  
be added to any of  
the stainless  
Whirling Nozzles.



**Max Spray Dia** : 2.6 - 3 m  
**Ope. Pressure** : 2 BAR  
**Max Temp.** : 140 °C  
**Coverage** : 360° & Partial

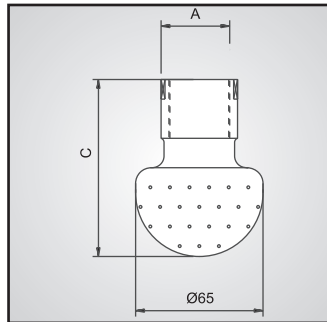
**Spray Angle** ↗



SR	MODEL NUMBER	END CONNECTION	FLOW RATE			DIMENSIONS	
			@ BAR			DIA	LENGTH
		A	1	2	3	B	C
1	ATUL- E69.050.24.1E.AL	3/4" BSP (F)	38	50	59	60	114
2	ATUL- E69.075.24.1E.AL	3/4" BSP (F)	57	75	88	60	114
3	ATUL- E69.100.24.1E.AL	3/4" BSP (F)	76	100	118	60	114
4	ATUL- E69.150.24.1E.AL	3/4" BSP (F)	114	150	176	60	114
5	ATUL- E69.050.24.1E.AN	1" BSP (F)	38	50	59	60	117
6	ATUL- E69.075.24.1E.AN	1" BSP (F)	57	75	88	60	117
7	ATUL- E69.100.24.1E.AN	1" BSP (F)	76	100	118	60	117
8	ATUL- E69.150.24.1E.AN	1" BSP (F)	114	150	176	60	117

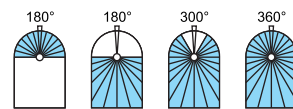
# ATUL STATIC SPRAY BALL - SERIES E27

- **Material :** Stainless  
Steel or Teflon
- Very compact  
static spray ball
- Sharp solid jets,  
excellent for  
rinsing
- Very fine surface  
finish inside and  
outside
- Applications : For  
Sanitary  
Environments,  
Dairies,  
Pharmaceuticals  
Processing, Food &  
Beverage  
Manufacturing,  
High Purity  
Chemicals



**Max Spray Dia** : 3 m  
**Ope. Pressure** : 2 BAR  
**Max Temp.** : 200 °C  
**Coverage** : 360° & Partial

**Spray Angle** ↗

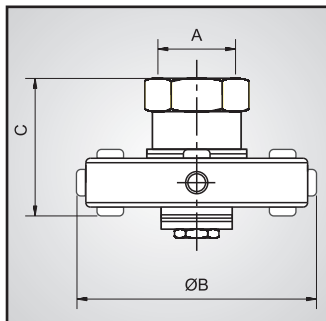


SR	MODEL NUMBER	END CONNECTION	FLOW RATE			DIMENSIONS	
			@ BAR			DIA	LENGTH
		A	1	2	3	B	C
1	ATUL- E27.028.24.1E.AD	1/4" BSP (F)	21	28	33	24	38
2	ATU- E27.030.24.1E.AE	3/8" BSP (M)	23	30	35	24	43
3	ATUL- E27.040.24.1E.AH	1/2" BSP (F)	30	40	47	30	45
4	ATUL- E27.060.24.1E.AL	3/4" BSP (F)	45	60	71	42	68
5	ATUL- E27.060.24.1E.TF10	1" PIN TYPE	45	60	71	42	68
6	ATUL- E27.110.24.1E.AN	1" BSP (F)	100	110	120	54	95
7	ATUL- E27.170.24.1E.TF150	1.5" PIN TYPE	129	170	200	65	116
8	ATUL- E27.210.24.1E.TF200	2" PIN TYPE	160	210	250	98	150

*Very compact static spray ball sharp solid jets, excellent for rinsing small drums also to use with saturated steam*

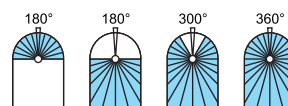
## ATUL SPRAY BALL - SERIES E77

- **Material** : Stainless Steel 316
- **Bearing** : PTFE Slide Bearings
- High cleaning performance at low pressure
- PTFE Bearings easily replaced to extend the service life
- Free Spinning, Self Lubricating & Self Flushing
- Heavy Duty, High Capacity



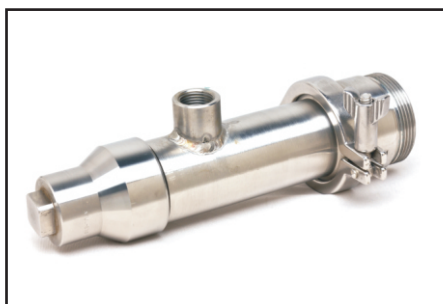
**Max Spray Dia** : 6-9 m  
**Ope. Pressure** : 2 BAR  
**Max Temp.** : 200 °C  
**Coverage** : 360° & Partial

**Spray Angle** ↗



SR	MODEL NUMBER	END CONNECTION	FLOW RATE			DIMENSIONS	
			@ BAR			DIA	LENGTH
		A	1	2	3	B	C
1	ATUL- E77.150.24.1E.AN	1" BSP (F)	150 TO 300 LPM			117	68
2	ATUL- E77.300.24.1E.AW	2" BSP (F)	300 TO 600 LPM			151	97
3	ATUL- E77.600.24.1E.AZ	3" BSP (F)	650 TO 1000 LPM			238	116

## RETRACTABLE CIP / DEREATOR SPRAY NOZZLE



The retractable CIP spray nozzle is designed to remain in place during production in sanitary applications. The liquid-activated spray head, which fully retracts after CIP, provides a wider spray and larger jets to ensure complete cleaning of equipment and components and can be easily removed for inspection.

### Specifications:

- Liquid Pressure Requirements: 2 – 3 bar
- Spray Pattern: spray jet; 360° x 200° coverage;
- Flow Rates: upto 100 lpm
- Stainless steel body and fittings,
- Teflon bearings for durability

## SPECIAL CIP SPRAY NOZZLE



This specially designed CIP Nozzle is useful for cleaning of VTD ( Vacuum Tray Dryer ) and other small compartments. This compact CIP Nozzle has several flat jet nozzles welded at various angles and of various flow to achieve maximum cleaning operation. This nozzle can cover 360 degree area. Teflon bearing is used for smooth and fast running, which gives trouble free operation years by years.



## OTHER NOZZLES

## ATUL SPRAY SYSTEMS



**AIR ATOMIZING**



**FBP SPRAY GUNS**



**FULL CONE**



**HOLLOW CONE**



**FLAT JET**



**ACCESORIES**



**CLIP ON TYPE SPRAY NOZZLE**



**COMPRESSED AIR NOZZLES**

**Office :** Unit No. 3, Sonai Industrial Estate, Opp. Krishana Air Products, Pokharan Road No. 1, Upvan, Thane (West), Mumbai - 400 606.

**Tel. :** 022 2588 7186 **Mob :** +91 88793 98165

**Email :** atulspraynozzles@gmail.com

**Work :** Plot No. M - 122, Village Pale, Additional Ambernath, Phase - III, Ambernath (E) - 421506. Dist - Thane, Maharashtra (INDIA).

**Mob. :** +91 93246 93867

**Email :** sales@atulspryanozzles.com